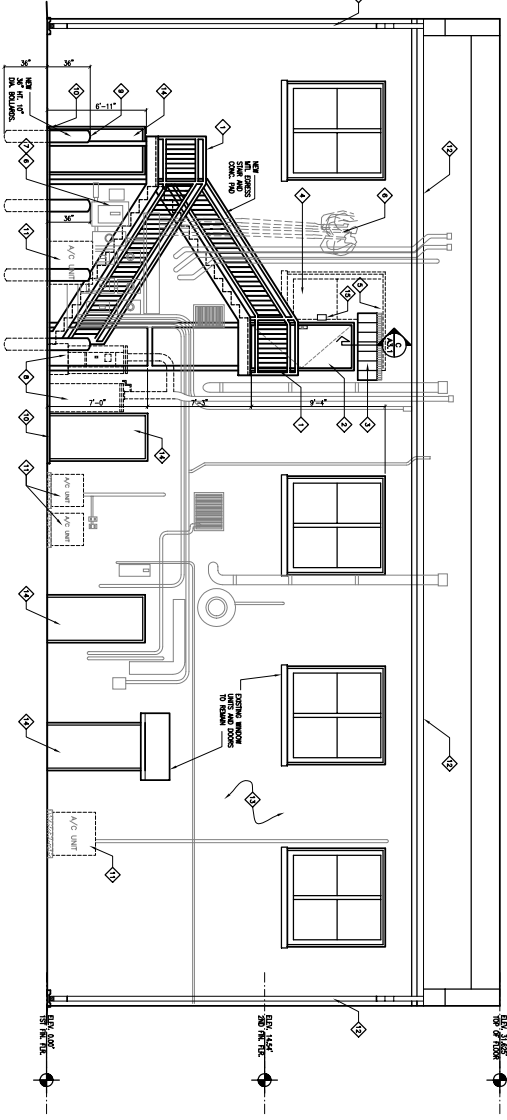
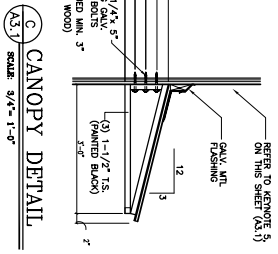


**PHASE II**  
**FRONT ELEVATION**  
SCALE: 1/4" = 1'-0"

ALL NEW MATERIALS SHALL BE PAINTED BLACK  
ALL EXISTING MATERIALS SHALL BE PAINTED WHITE



**PHASE I**  
**REAR ELEVATION**  
SCALE: 1/4" = 1'-0"



**CANOPY DETAIL**  
SCALE: 3/4" = 1'-0"

- KEYNOTES:**
- ◆ NEW METAL CORNER SHIMS (PAINTED BLACK)
  - ◆ NEW FLUSH METAL CORNER FINISH (PAINTED BLACK)
  - ◆ CONNECTIONS WITH WOOD JOISTS: 1-1/2" x 1/2" LUG BOLTS TO BE USED THROUGH JOISTS TO BE ATTACHED TO METAL CORNER SHIMS.
  - ◆ REMOVE EXISTING ALUMINUM WINDOW LIFT AND PUT SYSTEMS AND BRACKETS TO BE REMOVED TO BE REINSTALLED TO BE USED TO SUPPORT NEW WINDOW LIFT AND PUT SYSTEMS.
  - ◆ REMOVE EXISTING 1/2" STEEL STUDS TO BE REPLACED WITH NEW 1/2" STEEL STUDS TO BE INSTALLED TO BE USED TO SUPPORT NEW WINDOW LIFT AND PUT SYSTEMS.
  - ◆ REMOVE EXISTING EXTERIOR STAKE TO BE REPLACED WITH NEW EXTERIOR STAKE TO BE INSTALLED TO BE USED TO SUPPORT NEW WINDOW LIFT AND PUT SYSTEMS.
  - ◆ REMOVE EXISTING METAL CORNER SHIMS TO BE REPLACED WITH NEW METAL CORNER SHIMS TO BE INSTALLED TO BE USED TO SUPPORT NEW WINDOW LIFT AND PUT SYSTEMS.
  - ◆ REMOVE EXISTING METAL CORNER SHIMS TO BE REPLACED WITH NEW METAL CORNER SHIMS TO BE INSTALLED TO BE USED TO SUPPORT NEW WINDOW LIFT AND PUT SYSTEMS.
  - ◆ REMOVE EXISTING METAL CORNER SHIMS TO BE REPLACED WITH NEW METAL CORNER SHIMS TO BE INSTALLED TO BE USED TO SUPPORT NEW WINDOW LIFT AND PUT SYSTEMS.
  - ◆ REMOVE EXISTING METAL CORNER SHIMS TO BE REPLACED WITH NEW METAL CORNER SHIMS TO BE INSTALLED TO BE USED TO SUPPORT NEW WINDOW LIFT AND PUT SYSTEMS.

ALL NEW METAL CORNER SHIMS TO BE PAINTED BLACK

SHEET NO.  
**A.3.1**

MCO021015  
13 JUNE 2003

**CLINIC BUILDING**  
AT THE  
**THE ITALIAN CLUB OF TAMPA**  
YBOR, FLORIDA

**The MacEwen Group**  
Incorporated  
Architects and Planners  
Tampa, Florida  
AAC000737

Joseph C. Hubbar, AIA  
Suzette C. Fortin, AIA  
Copyright © 2003

THIS DOCUMENT IS THE PROPERTY OF THE ARCHITECT AND IS TO BE USED ONLY FOR THE PROJECT AND SITE SPECIFICALLY IDENTIFIED HEREIN. IT IS NOT TO BE REPRODUCED, COPIED, OR TRANSMITTED IN ANY FORM OR BY ANY MEANS, ELECTRONIC OR MECHANICAL, INCLUDING PHOTOCOPYING, RECORDING, OR BY ANY INFORMATION STORAGE AND RETRIEVAL SYSTEM, WITHOUT THE WRITTEN PERMISSION OF THE ARCHITECT. ANY UNAUTHORIZED USE OF THIS DOCUMENT IS PROHIBITED AND WILL BE CONSIDERED A VIOLATION OF THE ARCHITECT'S PROFESSIONAL ETHICS AND MAY BE SUBJECT TO LEGAL ACTION.