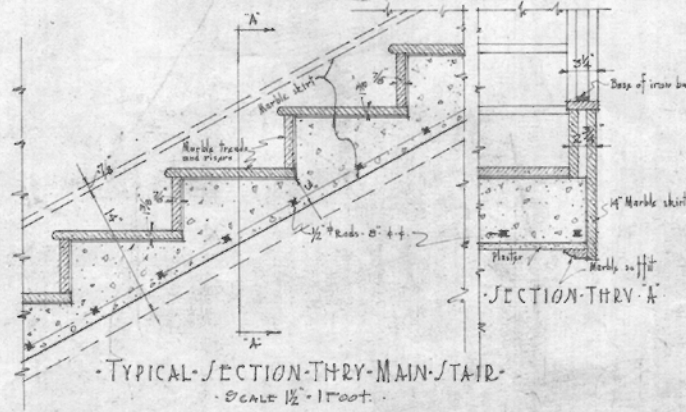
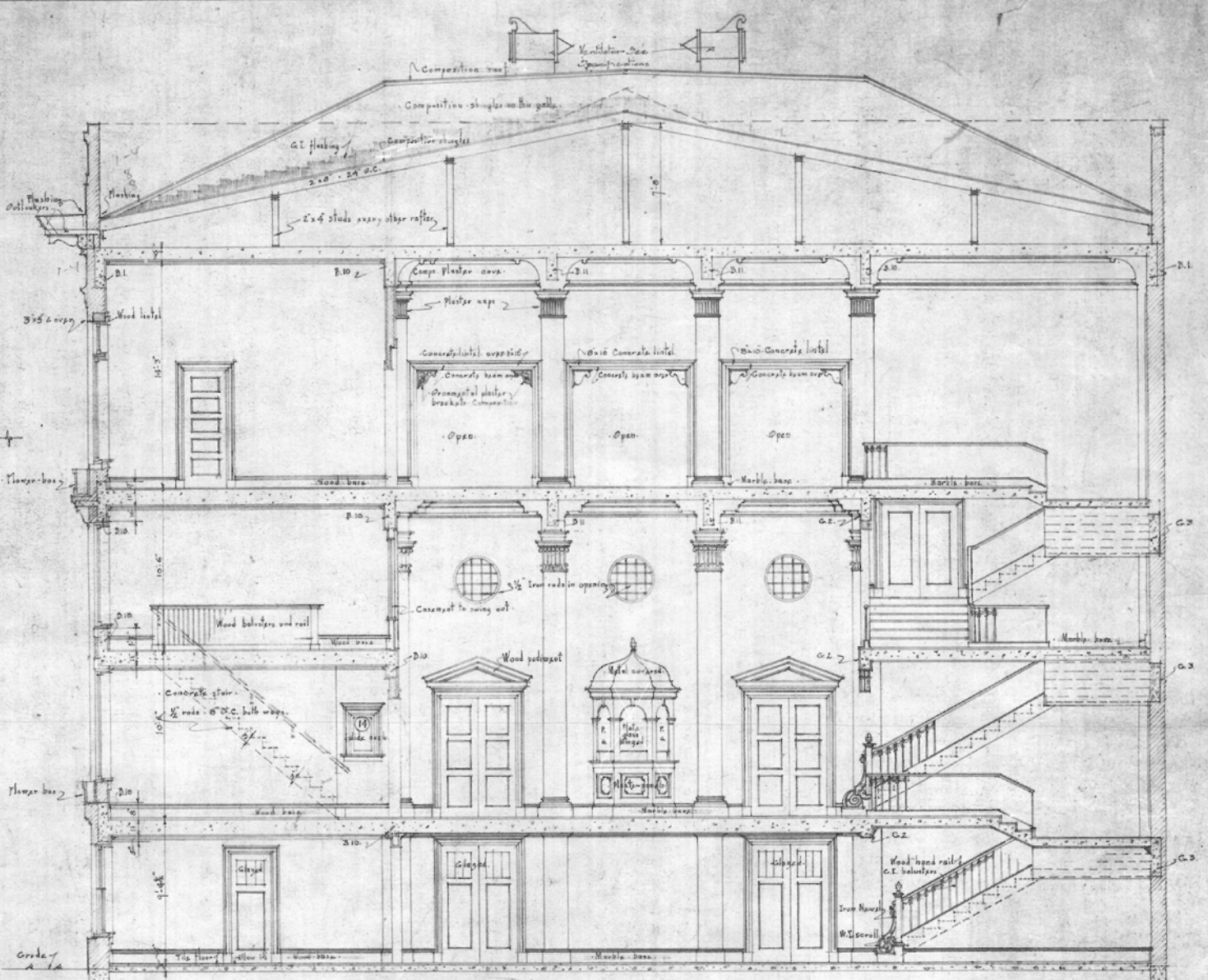
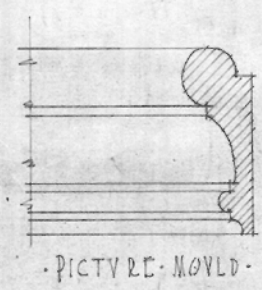


END ELEVATION OF BOYCE HALL.



TYPICAL SECTION-THRU-MAIN-STAIR
SCALE 1/2" = 1' FOOT

TRANSVERSE SECTION C. SHEET No 12.
SCALE 1/4" = 1' FOOT
L'UNIONE ITALIANA CLUB BUILDING
TAMPA FLORIDA.
DANFLOY AND ELLIOTT, ARCHITECTS.
TAMPA FLORIDA. Job No 53